

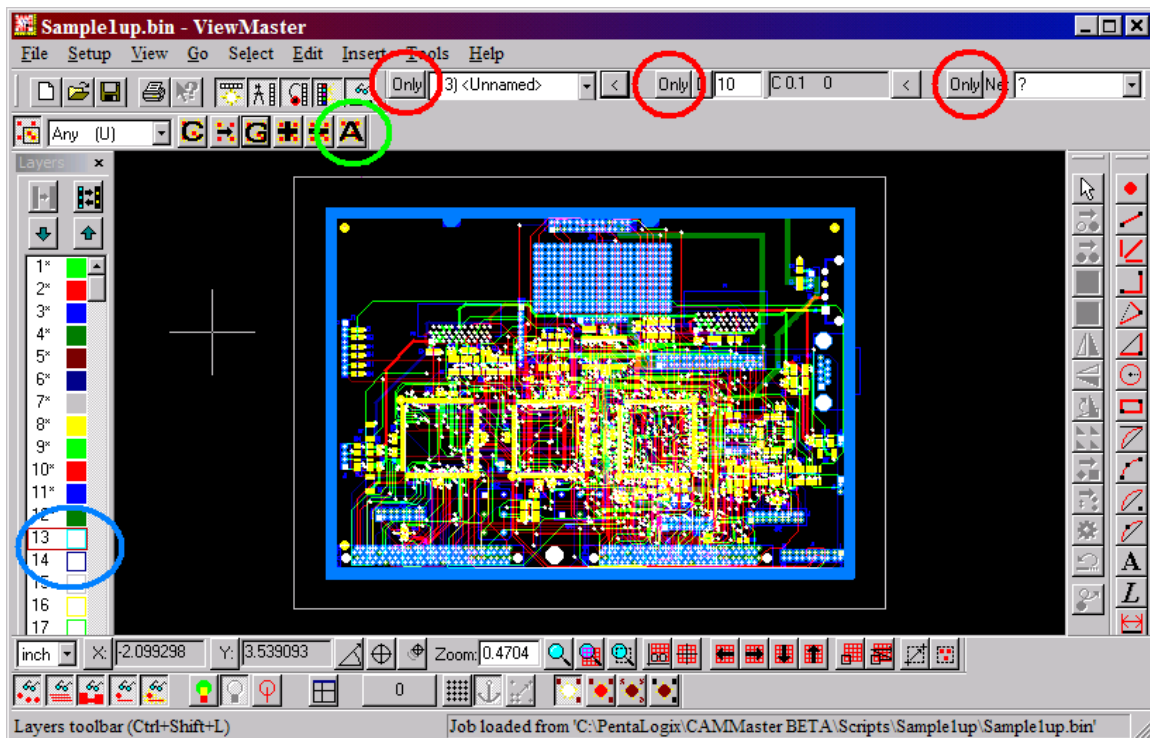
## Merging layers of multiple jobs for panelizing using ViewMasterEZ

Many of our customers are contract manufacturers working in a fast paced sales environment and are always looking for ways to stay ahead of the competition. Manufacturers are becoming more demanding of the file preparation being provided to them as are customers in demand of quick turn around and economical pricing. One of the ways PentaLogix products help to address these issues is with the application of merging layers of multiple jobs. ViewMasterEZ Software offers this feature in an inexpensive and easy to use package.

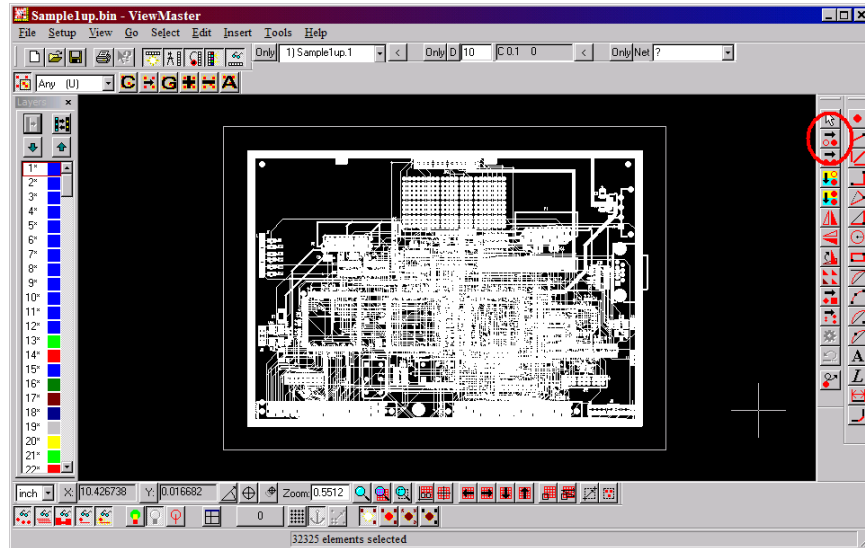
ViewMasterEZ imports multiple file formats; Gerber Basic / Gerber Extended / ODB++ / NC Drill data / Barco DPF / HPGL / HPGL2 and more.

To begin merging common layer types of different jobs, make sure all layers for each job, including drill files, are properly aligned before starting the merging process.

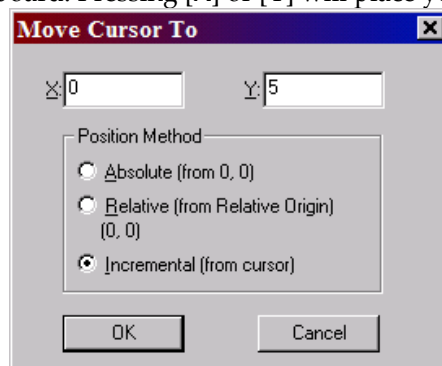
- Load all files the first job. Make sure that all Only buttons are toggled off. Click the Select All button. All data loaded will highlight.



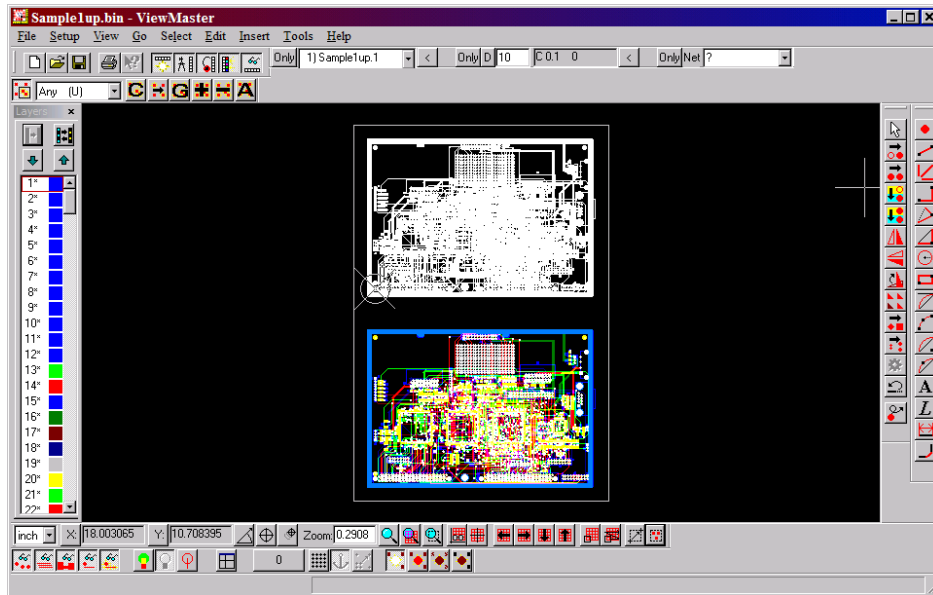
- On the Layers toolbar, click an empty to set a new active layer.
- Import all files for job number 2. The data will load starting on the empty active layer.



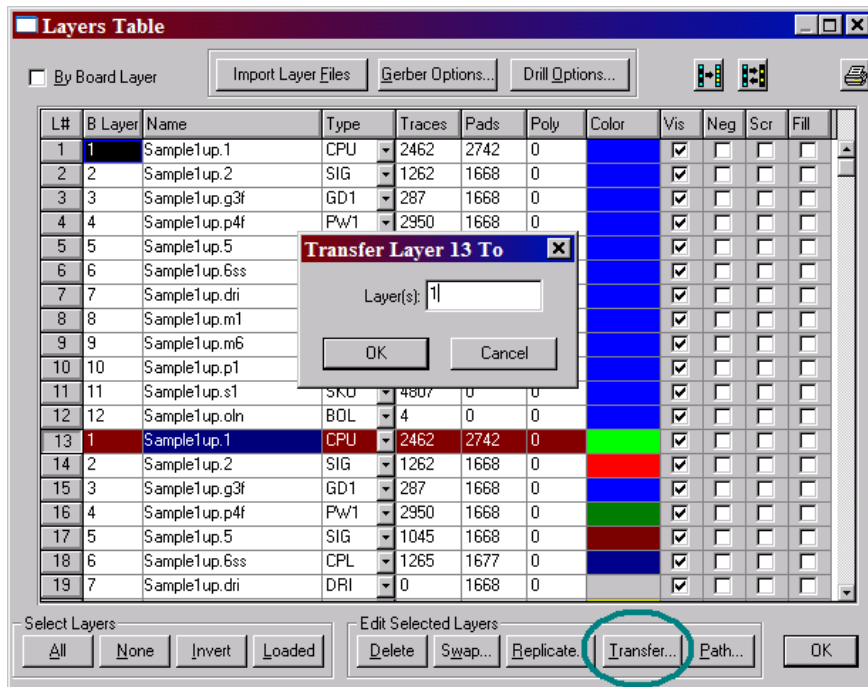
- On the Edit toolbar, **Click** the Move button. Moving data is a two click/step process. At the bottom of the screen on the Status Bar you will see instructions. The first step is to Pick start of move point.
- Place the cursor on a highlighted pad. Press [A] on your keyboard to align to the center of that pad. Press [Enter] to mark the reference point. The status bar will then read: Pick move-to point.
- Position the cursor to where you want to move the selected data. You can either move the cursor with your mouse and then Left mouse click to move the data, or you can precision place by pressing [X] on your keyboard. Pressing [X] or [Y] will place you in Move Cursor To mode.



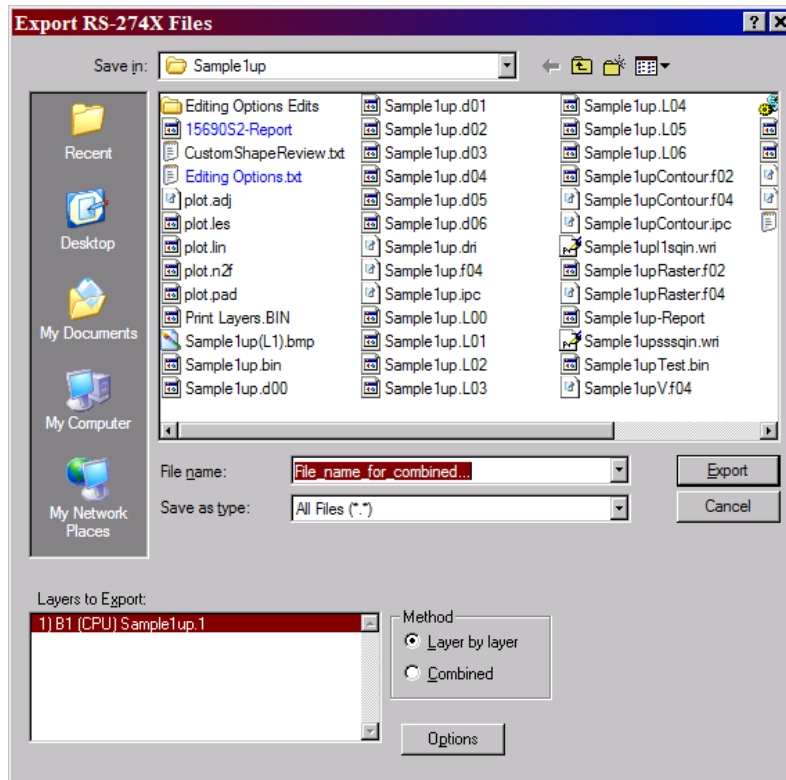
- Set the Position Method to Incremental (from cursor) and then enter the XY distance you wish to move the cursor from its current position. Press [Enter] on your keyboard two times. The first will move the cursor. The second will move the data. The status bar will then report how many elements have been moved.



- Press [Ctrl+U] on your keyboard to clear all the selected highlighted elements.



- Go to the [F10] Layers Table. Highlight/select the first layer to merge with a corresponding layer type of the other job, then click the Transfer button. You will be asked what layer do you want to transfer the data to. Select the appropriate layer and click OK.
- Repeat steps to transfer until all like layer types have been merged.
- Rename all newly merged layers. These names will be used for the new Gerber files that will be exported.



- Go to File- Export- Gerber Extended. Highlight all layers to you wish to create new Gerber files for under Layers to Export. Browse to the folder you wish your files to be saved in. Turn on the Layer by Layer Method and then click Export.

ViewMasterEZ allows you to see your files on the screen and in hardcopy as it will look on the plot.

As always, the PentaLogix technical support team stands ready to assist if you have any difficulty using ViewMasterEZ features. Your success is our primary goal.

Merging layers is just one of the many features available in ViewMasterEZ.

Some of ViewMasterEZ's other features include:

- **Automatically Import directories / zipped files**
- **"Guess" Import if you are unsure of the file format**
- **Cleanup malformed, self intersecting polygons**
- **Import & merge multiple aperture list formats**
- **Multiple database units of measurement**
- **Up to 255 layers of data**
- **Up to 10,000 simultaneously used apertures**
- **Graphical PCB editing**
- **Graphical NC Drill editing**
- **Layer editing and operations**
- **Step & Repeat**



2960 Camino Diablo, Suite 105, Walnut Creek, CA 94597

Tel. (925) 952-3890 Fax. (925) 934-6978 [www.pentalogix.com](http://www.pentalogix.com)

- Add dimensions to your drawings
- Drill Optimization
- Print to multiple output devices
- Translucent colors that reveal stacked elements
- Import & Export Multiple PCB data formats

For more information about ViewMasterEZ or any of the PentaLogix Software products please contact [Sales@pentalogix.com](mailto:Sales@pentalogix.com) or call us at (925) 952-3890.

### **Copyright, Disclaimer and Trademark Information**

**Copyright:** © PentaLogix LLC, 1985-2008. All rights reserved.

You may cite or refer to information published in this document, but you may not reproduce or distribute such information in whole or in part without the prior written permission of PentaLogix LLC.

Nothing contained herein shall be construed as conferring by implication or otherwise any license or right under any patent or trademark of PentaLogix or any third party. No other rights under any copyrights of PentaLogix or any other party are granted herein, except as expressly stated above.

**Disclaimer:**

Reasonable efforts have been made to ensure the accuracy of the information presented. However, PentaLogix assumes no responsibility for the accuracy of the information. Product information is subject to change without notice. PentaLogix may make improvements and/or changes in the products and/or the programs described in these publications at any time without notice.

**Trademark:**

**Pulsar Photoplotter, ProbeMaster, FixMaster, CAMMaster, Verify!, AutoVerify!, NetCompare, ViewMate, ViewMaster, ViewMasterEZ, ViewMasterPLUS, ViewMasterPRO, RoutMaster, and LAV501 are trademarks or registered trademarks of PentaLogix LLC.**

All products and brand names are trademarks or registered trademarks of their respective holders.